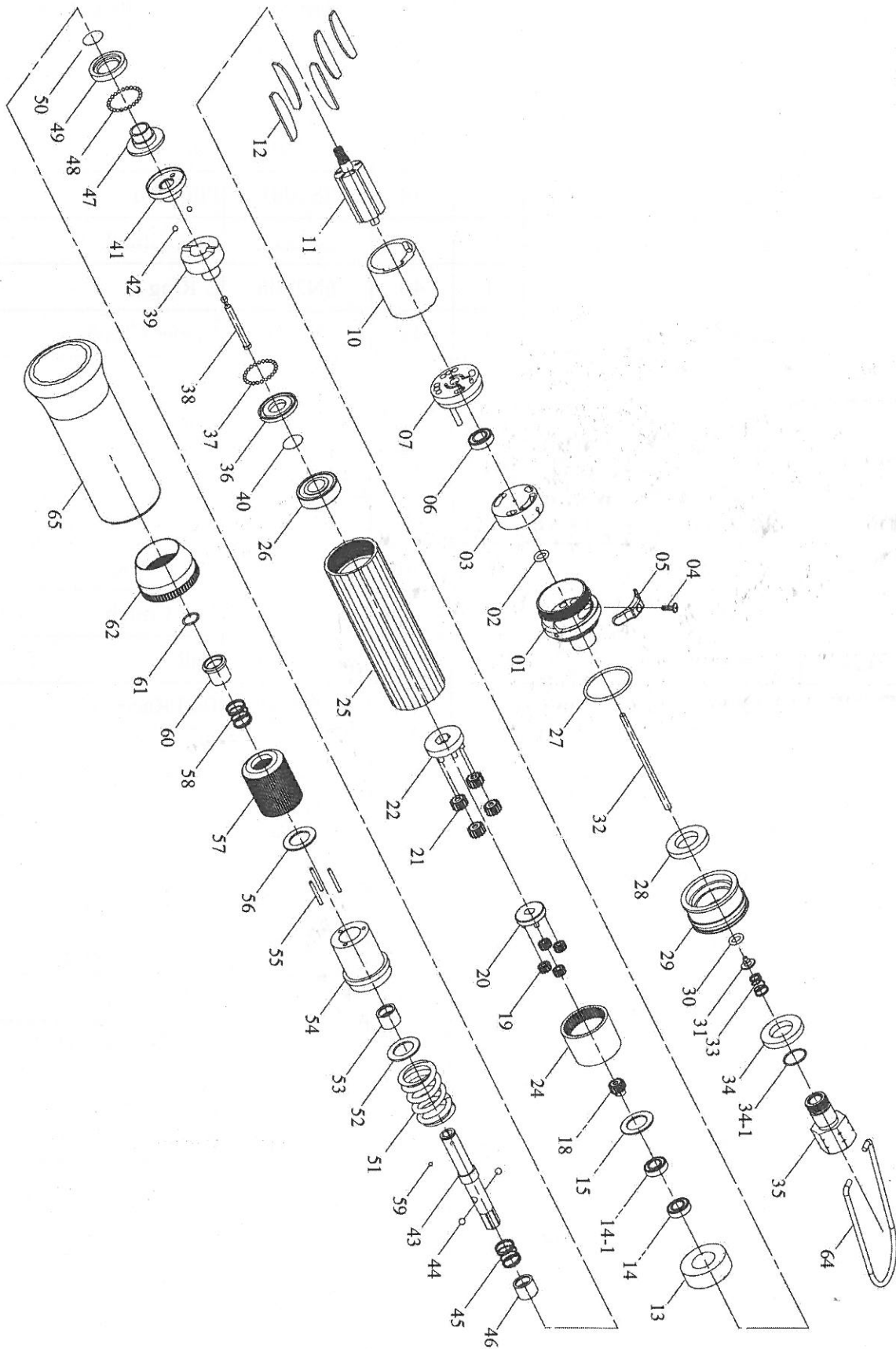


PNEUMATIC SCREWDRIVER MODEL NO.

F3T30PB

T30PB



PNEUMATIC SCREWDRIVER MODEL NO.

F3T30PB

No.	Part No.	Part Name	Q'ty	No.	Part No.	Part Name	Q'ty
1	5A3004	End Housing (Blue)	1	35	2S2002	Air Inlet Bushing [PT]	1
2	7Q2005	O Ring	1	36	2S2103	Retainer	1
3	2P3000	Valve	1	37	7S2102	Ball	28
4	7S2158	Set Screw And Washer	1	38	3S2001	Pilot Pin	1
5	2L3010	Switch	1	39	3S2211	Rear Clutch	1
6	7S2016	Ball Bearing	1	40	6N2006	C Ring	1
7	1S3001	End Plate	1	41	3S2215	Center Clutch	1
10	1P3005	Cylinder	1	42	7S2112	Ball	2
11	1S3043	Rotor	1	43	3S2021	Anvil	1
12	1P3050	Blade	5	44	7S2105	Ball	2
13	1P3065	Front Plate	1	45	6N2110	Spring	1
14	7S2002	Ball Bearing	1	46	3S2226	Slide Base	1
14-1	7S2007	Ball Bearing	1	47	3S2222	End Clutch	1
15	2S5134	Washer	1	48	7S2102	Ball	22
18	1G6279	18T Plant Gear	1	49	3S2231	Ball Race	1
19	1P2110	12T Plate Gear	4	50	6N3100	C Ring	1
20	1P3274	Third Gear Cage and Main Gear	1	51	6N3013	Torque Spring	1
21	1P2110	12T Plant Gear	4	52	2S2120	Washer	1
22	1P2284	Third Gear Cage	1	53	3S2245	Anvil Bushing	1
24	1S2061	Internal Gear	1	54	3A2203	Clutch Housing	1
25	5A3010	Center Housing (Blue)	1	55	6S2011	Needle Pin	3
26	7S5003	Ball Bearing	1	56	3S3101	Regulation Washer	1
27	7Q2015	O Ring	1	57	3A3001	Torque Ring	1
28	2P3010	Silencer	2	58	6N2110	Spring	1
29	2A3001	Exhaust Deflector	1	59	7S3107	Ball	1
30	7Q2007	O Ring	1	60	5S2001	Bit Slide Sleeve	1
31	6S2020	Valve Plate	1	61	6N2001	C Ring	1
32	6S2009	Operating Rod	1	62	5A3020	Rear Housing	1
33	6N2100	Cone Spring	1	64	5N2001	Suspension Ring	1
34	2P3020	Silencer	1	65	5L3010	Soft Cover	1