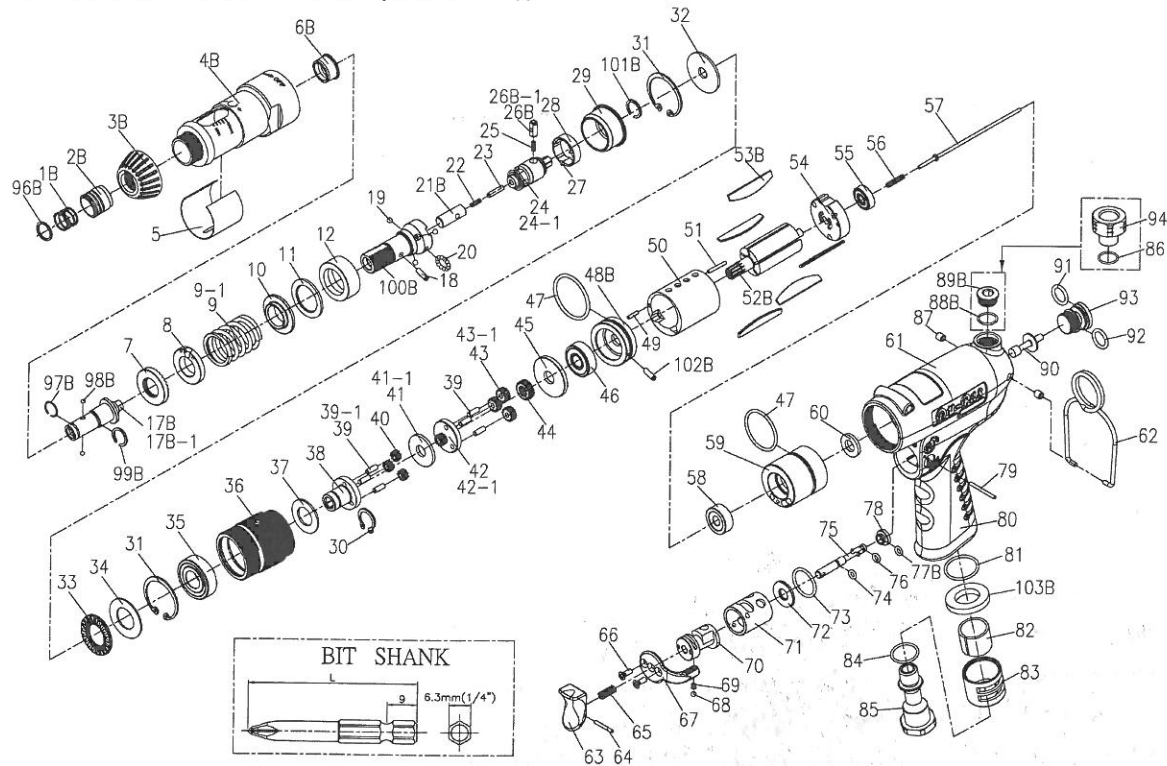


# EXPLODING VIEW (TDCS-30 (Shut-Off))



Edition:B

Index No.	Part No.	Description	Q'ty	Index No.	Part No.	Description	Q'ty			
1B	B20S-418	Spring	1	75	C20-505	Valve Stem	1			
2B	C20S-417A	Quick Change Holder	1	76	00-4153	O-Ring(Ø3xØ1.5)	1			
3B	C20S-203A	Lock Cap	1	77B	00-41256	O-Ring(Ø4.5xØ1.5)	1			
4B	C30-201-B	Clutch Housing	1	78	C20-514	Air Inlet Spacer	1			
5	C20S-204	Adjusting Cap	1	79	1100-511	Pin	1			
6B	C20S-202A	Anvil Bushing	1	80	C20-103	Housing Rubber	1			
7	CS20S-430	Adjusting Nut	1	81	00-41145	O-Ring(Ø18xØ21xØ1.5)	1			
8	CS20S-431	Adjusting Lock Ring	1	82	140-601	Muffler	1			
10	CS30S-433	Spring Seat	1	83	140-603	Exhaust Deflector	1			
11	CS20S-451	Washer(Ø18.1xØ27x1.5t)	1	84	00-41111	O-Ring(Ø16xØ19xØ1.5)	1			
12	CS20S-434	Anvil Ring	1	85	140-604A	Air Inlet 1/4"PF-19	1			
17B	CS20S-405A	Anvil	1	85	140-604B	Air Inlet 1/4"PT-19	1			
17B-1	CS20S-405B	Anvil	1	85	140-604C	Air Inlet 1/4"NPT-13	1			
18	00-3319	Spring Pin(Ø3x12L)	1	86	00-4118	O-Ring (P10A)	1			
19	00-3823	Steel Ball(5)	3	87	140S-108	Bushing	4			
20	00-3820	Steel Ball(3/32")	19	88B	00-41254	O-Ring(Ø8xØ1.5)	1			
21B	CS30R-432	Anvil Shaft	1	89B	B20-107	Set Screw	1			
22	CS20S-435	Spring	1	90	CS30-318	Shut Bar	1			
23	00-3454	Pin(3x14L)	1	91	00-41175	O-Ring (Ø13xØ1.5)	1			
25	CS20S-438	Spring	1	92	00-41121	O-Ring (Ø1.5xØ11)	1			
27	00-3445	Pin(1.5x7.8L)	1	93	C20-104	Screw Cap	1			
28	CS20S-449	Control Ring	3	94	C20-604A	Air Inlet 1/4"PF-19	1			
29	CS30S-439	Ball Keeper	1	94	C20-604B	Air Inlet 1/4"PT-19	1			
30	00-3507	Snap Ring(S12)	2	94	C20-604C	Air Inlet 1/4"NPT-18	1			
31	00-3113	Snap Ring(R28)	2	96B	B20S-415	Spring Washer	1			
32	C30S-422	Washer	1	97B	B20S-428B	Anvil Collar B	1			
33	00-2801	Roller Bearing(NTB1528)	1	98B	00-3816	Steel Ball(Ø2.5)	2			
34	00-1515	Washer	1	99B	B20S-428A	Anvil Collar A	1			
35	00-2305A	Ball Bearing(6001 28x12x8t)	1	100B	CS30S-416	Transmission Shaft	1			
36	C30S-440A	Internal Gear A	1	101B	B20S-428C	Anvil Collar C	1			
37	C20S-441	Washer	1	102B	00-3328	Spring Pin(Ø2x4L)	1			
38	C30S-442A	Front Gear Cage A	1	103B	C10S-601	Muffler	1			
45	C20S-448	Rear Cover	1			FOR TDCS-3007				
46	00-2332	Ball Bearing(608ZZ Ø22xØ8x7t)	1	9	CS30S-429A	Spring A	1			
47	00-41177	O-Ring(Ø25.12xØ1.78)	2	24	CS30S-436B	Driving Clutch	1			
48B	B20S-301	Front Plate	1	26B	CS20S-437A	Control Pin	1			
49	00-3430	Pin(Ø2x8L)	3	39	00-3424	Pin(3x8L)	3			
50	C30S-302	Cylinder	3	39-1	00-3460	Pin(4x8L)	3			
51	00-3404	Pin(Ø2x17.8L)	3	40	C30S-443A	Planet Gear A	3			
52B	CS30S-303A-B	Rotor A	1	41	C20S-444B	Washer B(2m/m)	1			
53B	C30S-304D	Rotor Blade	5	41-1	C20S-452B	Rear Gear Cage B+ Rear Gear B	1			
54	C30S-305	Rear Plate	1	42-1	C20S-443B	Planet Gear B	3			
55	00-2355	Ball Bearing(625Z Ø16xØ5x5t)	1			FOR TDCS-3011				
56	CS20SL-317	Spring	1	9-1	CS20S-429B	Spring B	1			
57	CS30SL-314	Valve Stem	1	24-1	CS30S-436	Driving Clutch	1			
58	C20-320	Holder Cap	1	26B-1	CS20S-437	Control Pin	1			
59	C30-309	Cage	1	39	00-3424	Pin(3x8L)	3			
60	C20-319	Shutting Spacer(PU)	1	39-1	00-3460	Pin(4x8L)	3			
61	C20-101	Motor Housing	1	40	C30S-443A	Planet Gear A	3			
62	I40S-102	Hanger	1	41	C20S-444B	Washer B(2m/m)	1			
63	C20-504	Trigger	1	41-1	C20S-452B	Rear Gear Cage B+ Rear Gear B	1			
64	00-3354	Spring Pin(Ø2x14)	1	42-1	C20S-443B	Planet Gear B	3			
65	C20-507	Spring	1	43	C20S-443A	Planet Gear A	1			
66	00-0505	Screw(M3x6L)	2	44	C20S-447	Rotor Gear	1			
67	C20-503	Reverse Knob	1			FOR TDCS-3017				
68	00-3805	Steel Ball(1/8")	1	9-1	CS20S-429B	Spring B	1			
69	I100-506	Spring	1	24-1	CS30S-436	Driving Clutch	1			
70	C20-502	Reverse Valve	1	26B-1	CS20S-437	Control Pin	1			
71	C20-501	Valve Sleeve	1	39	00-3424	Pin(3x8L)	3			
72	C20-517	Valve Sleeve Cap	1	41	C20S-444A	Washer A(2m/m)	6			
73	00-4173	O-Ring(Ø18xØ1)	1	42	C20S-452A	Rear Gear Cage A+ Rear Gear A	1			
74	00-4101	O-Ring(Ø3xØ5xØ1)	1	43	C20S-443A	Planet Gear A	6			
				44	C20S-447	Rotor Gear	1			
Model	Hex Size of Bit	Bit Shank	Torque Range		Weight		Length		Free Speed	Sound Level
			N-m	In-lb	kg	lb	mm	in	r.p.m.	(dBA)
TDCS-3007	6.35mm(1/4")	9mm	3~8	26.4~70	1.2	2.64	234	9.2	700	78
TDCS-3011	6.35mm(1/4")	9mm	2.5~6	22~52.8	1.2	2.64	234	9.2	1100	78
TDCS-3017	6.35mm(1/4")	9mm	2~4.5	17.6~39.6	1.2	2.64	234	9.2	1700	78

© Air Hose Size:6.35mm(1/4") ; Recommended Air Pressure:85psi (6kg/cm<sup>2</sup>)0.6Mpa