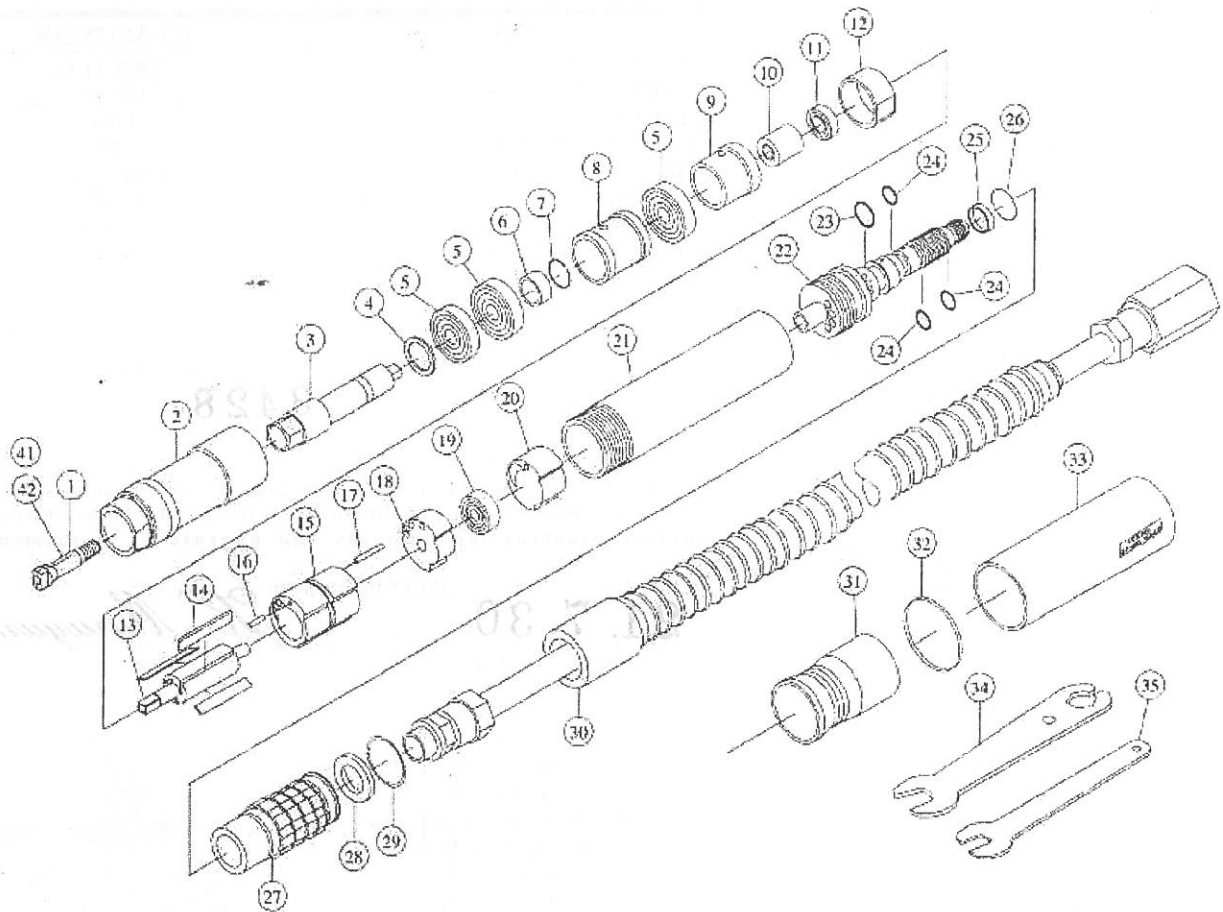


GT-MG75SAR — Exploded diagram drawing & Parts list



Index No.	EDP No.	Description	Number Required	Index No.	EDP No.	Description	Number Required
1	817501	Collet Chuck 3mm	1	25	817525	Cover, O-Ring	1
2	817502	Cap, Front End	1	26	817526	O-Ring S0-006-18	1
3	817503	Shaft, Collet	1	27	817527	Throttle	1
4	817504	Washer, Collet	1	28	817528	Filter	1
5	817505	Bearing MR148TZZA, Ball	3	29	817529	C-Pin, Throttle Retainer	1
6	817506	Ring, Collet Shaft	1	30	817530	Hose Set (Inlet-1.5m, Outlet-0.6m)	1
7	817507	C-Pin, Ring Retainer	1	31	817531	Soft Grip, Front	1
8	817508	Front Collar, Bearing	1	32	817532	Ring, Main Housing	1
9	817509	Rear Collar, Bearing	1	33	817533	Soft Grip, Rear	1
10	817510	Clutch	1	34	817534	Spanner A/F9mm	1
11	817511	Bearing 604ZZ, Ball (Inside No.12)	(1)	35	817535	Spanner A/F5mm	1
12	817512	Endplate, Front (w/B.B)	1				
13	817513	Rotor	1				
14	817514	Blade, Rotor	3				
15	817515	Cylinder (w/K.P.)	1				
16	817516	Dowel SP1.2 x 5, Cylinder (Inside No.15)	(1)				
17	817517	Dowel SP1.2 x 12, Cylinder (Inside No.15)	(1)				
18	817518	Endplate, Rear (w/B.B.)	1				
19	817519	Bearing R2ZZ, Ball (Inside No.18)	(1)				
20	817520	Shim	1				
21	817521	Housing, Main	1				
22	817522	Valve, Adjustment	1				
23	817523	O-Ring S0-020-6HS90	1				
24	817524	O-Ring S5HS90	3				
						OPTIONS	
				41	817541	Collet Chuck 2.35mm	1
				42	817542	Collet Chuck 1/8"	1

VESSEL CO.,INC.
OSAKA, JAPAN

17-25 FUKAEKITA 2-CHOME,
HIGASHINARI-KU, OSAKA JAPAN 537-0001
TEL: +81 6 6976 7778 FAX: +81 6 6972 9441
E-MAIL : export@vessel.co.jp