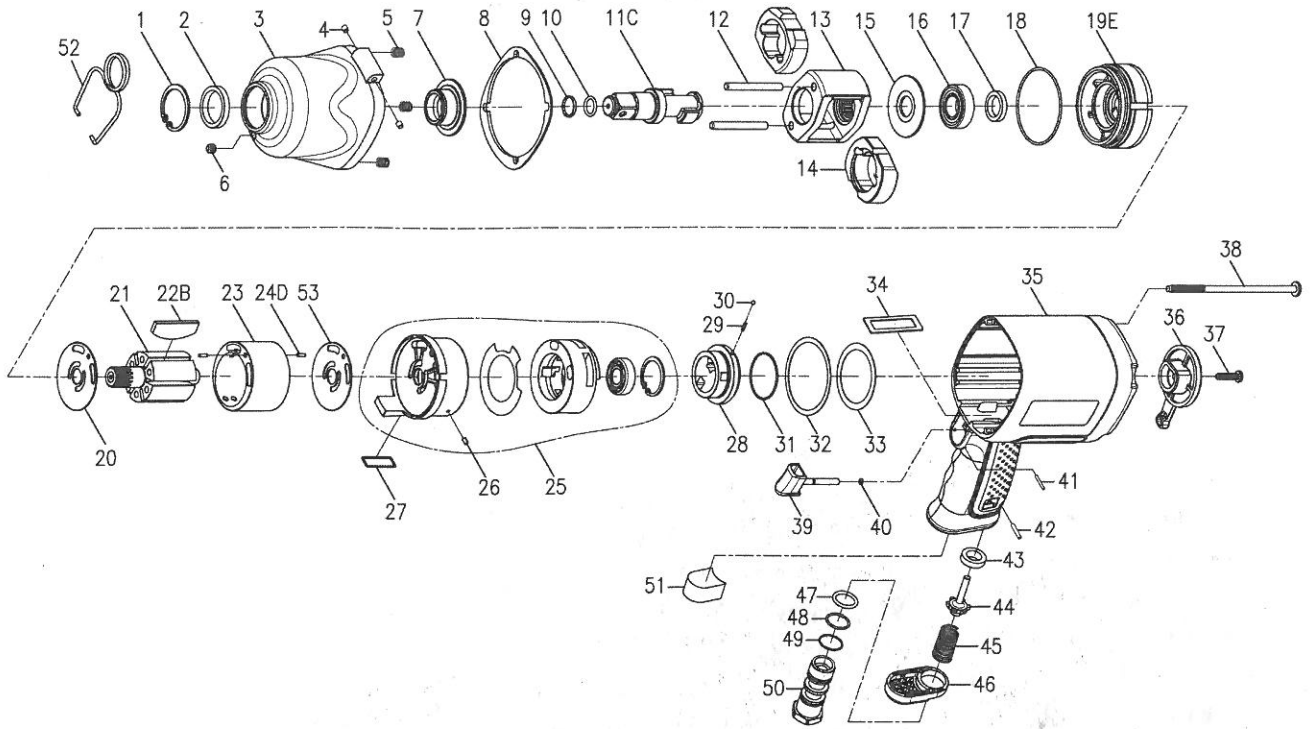


3/4" INDUSTRIAL AIR IMPACT WRENCH



Index No.	Part No.	Description	Q'ty	Index No.	Part No.	Description	Q'ty
1	00-3111	Snap Ring	1	27	278F-041	Square Ring	1
2	00-4237	Oil Seal	1	28	278J-021	Reverse Valve	1
3	W278V-002	Hammer Case	1	29	305F-034	Spring	1
4	I40S-108	Bushing	2	30	00-3805	Steel Ball	1
5	00-4306	Inserts Recoil	4	31	00-4179	O-Ring	1
6	00-0612	Set Screw	1	32	278F-030	Rear Gasket	1
7	W278V-010	Anvil Bushing	1	33	278F-031	Washer	1
8	278F-020	Front Gasket	1	34	278F-019	Air Channel Gasket	1
9	280-028	Anvil Collar	1	35	278V-001	Motor Housing	1
10	00-4122	O-Ring	1	36	278V-022	Regulator Knob	1
11C	W278V-011A6	Anvil	1	37	00-6202	Cap Screw	1
12	285C-016	Hammer Pin	2	38	278F-028	Screw	4
13	278D-012	Hammer Cage	1	39	278H-024	Trigger	1
14	278V-017	Hammer	2	40	00-4101	O-Ring	1
15	278-019-B	Rear Washer	1	41	00-3335	Spring Pin	1
16	00-2325	Ball Bearing	1	42	00-3308	Spring Pin	1
17	00-4213	Oil Seal	1	43	W305V-027	Bushing	1
18	00-41114	O-Ring	1	44	306-026	Valve Stem	1
19E	W278V-005-B	Front End Plate	1	45	278H-026	Spring	1
20	W278V-019	Front End Washer	1	46	278V-021	Exhaust Deflector	1
21	W278V-007	Rotor	1	47	00-4126	O-Ring	1
22B	278H-008D	Rotor Blade	6	48	00-4143	O-Ring	1
23	W278V-006	Cylinder	1	49	00-4173	O-Ring	1
24D	00-3336	Spring Pin	2		278J-025A	Air Inlet(3/8" PF-19)	1
	W278V-009	Rear End Plate	1	50	278J-025B	Air Inlet(3/8" PT-19)	1
	278F-033	Valve Sleeve Gasket	1		278J-025C	Air Inlet(3/8" NPT-18)	1
25	278F-029	Valve Sleeve	1	51	278V-027	Non Woven	1
	00-2304	Ball Bearing	1	52	I40S-102	Hanger	1
	00-3111	Snap Ring	1	53	W278V-020	End Plate Washer	1
26	00-3355	Spring Pin	1				