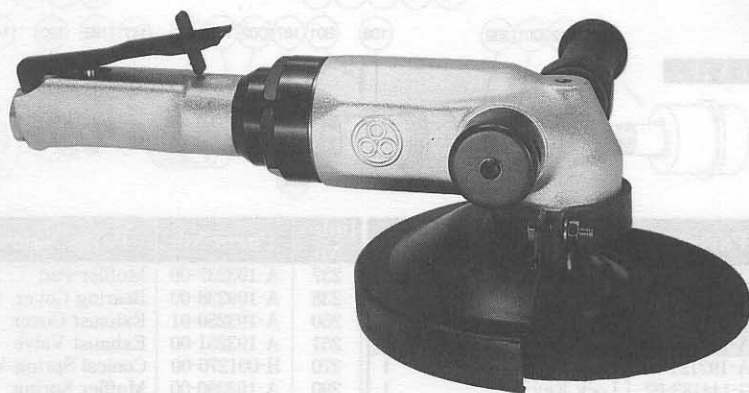




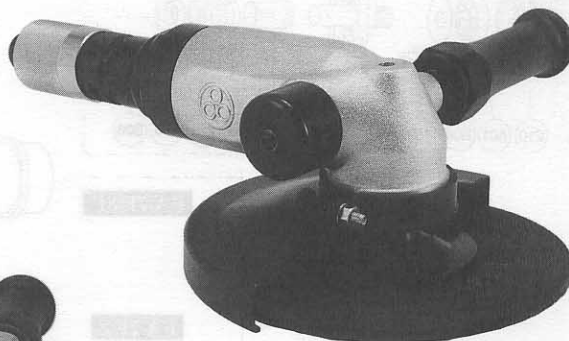
USER MANUAL

ANGLE GRINDERS

MODELS : FA-7E-8, -8F



FA-7E-8F



FA-7E-8

SPECIFICATIONS

Model	Max. Dia (Grinding Wheel)		Max. Free Speed	Spindle Thread Size	Angle Head Height (about)		Overall Length (about)		Mass (about)		Air Consumption Under Load (about)		Air Inlet Thread Size	Air Hose Size	
	mm	in			min ⁻¹	in	mm	in	mm	in	kg	lb		Nm ² /min	Nft ² /min
FA-7E-8	180×6×22.2	7×1/4×7/8	8,400	U5/8-11(M)	101	3 31/32	294	11 37/64	3.1	6.9	1.40	49.5	3/8"	12.7	1/2
FA-7E-8F	180×6×22.2	7×1/4×7/8	8,400	U5/8-11(M)	101	3 31/32	329	12 61/64	3.1	6.9	1.40	49.5	3/8"	12.7	1/2

The performance figures are at 0.63MPa (6.3bar).

⚠ Refer to "The Instructions and Warning for Safety Use" enclosed in each tool box.

FUJI AIR TOOLS CO., LTD.

2-1-14 Kamiji, Higashinari-ku, Osaka, 537-0003 Japan

Tel : (06) 6972-2335

Fax : (06) 6972-2250

BOLT & NUT SETTERS
SCREW DRIVERS

ABRASIVE TOOLS

DRILLS • TAPPERS

PERCUSSION TOOLS

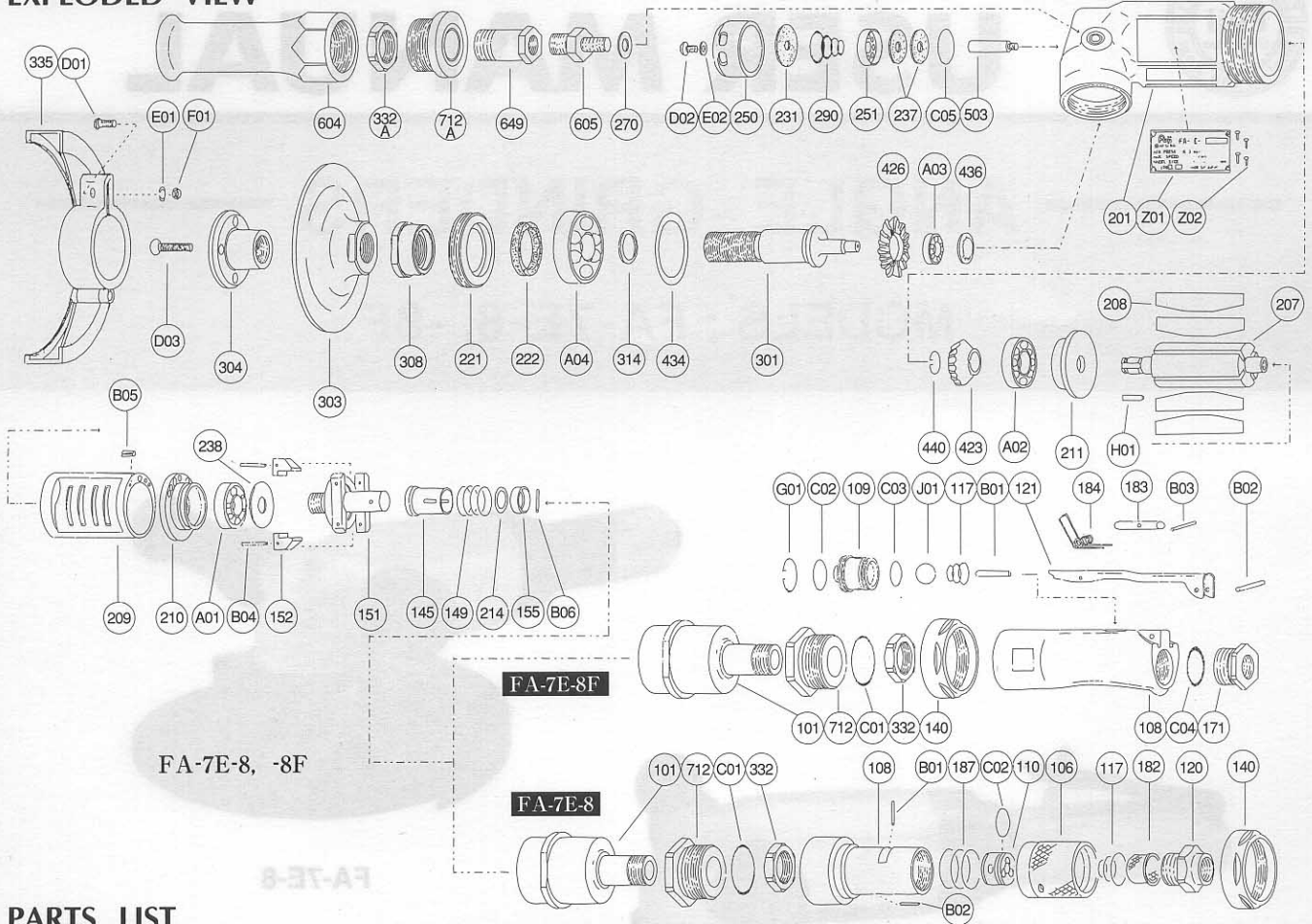
AIR MOTORS & OTHERS

OTHER PRODUCTS



PARTS LIST MODEL: FA-7E-8, -8F

EXPLODED VIEW



PARTS LIST

Index No.	Parts No.	Parts Name	Qt.	Index No.	Parts No.	Parts Name	Qt.	Index No.	Parts No.	Parts Name	Qt.
FA-7E-8				C04	O-P20	"O" Ring	1	237	A-193237-00	Muffler Pad	2
CP No.	A-193001-00	Housing Cover CP		G01	SR-R20	Snap Ring	1	238	A-109238-00	Bearing Cover (B)	1
101	A-193101-00	Housing Cover	1	101	B-9/16U	Urethan Ball	1	250	A-193250-01	Exhaust Cover	1
332	A-192332-00	Lock Nut	1	CP No.	A-192019-00	Lock Lever CP		251	A-193251-00	Exhaust Valve	1
712	A-192712-00	Damper	1	121	A-192121-00	Lock Lever	1	270	H-001270-00	Conical Spring Washer	1
C01	O-S29	"O" Ring	1	183	G-144183-02	Lock Key	1	290	A-192290-00	Muffler Spring	1
CP No.	A-193003-00	Throttle Valve CP		184	G-144184-00	Lock Spring	1	301	A-193301-01	Wheel Spindle	1
106	A-077106-03	Throttle Valve Handle	1	B03	SP-218	Spring Pin	1	303	A-193303-01	Wheel Flange (A)	1
108	A-193108-00	Throttle Valve Body	1	FA-7E-8 FA-7E-8F				304	A-193304-03	Wheel Flange (B)	1
110	A-077110-00	Throttle Valve	1	CP No.	A-193010-00	Governor Weight CP		308	A-193308-00	Spacer	1
117	A-077117-00	Throttle Valve Spring	1	151	A-093151-00	Governor Cage	1	314	A-109314-00	Wheel Spindle Washer (T=0.5)	1
120	A-077120-00	Throttle Valve Cover (PT)	1	152	G-053152-00	Governor Weight	2	314	A-109314-01	Wheel Spindle Washer (T=0.3)	1
120	A-077120-01	Throttle Valve Cover (NPT)	1	B04	GP-2.524GCH	Grooved Pin	2	314	A-109314-02	Wheel Spindle Washer (T=0.2)	1
182	W-057182-00	Strainer	1	CP No.	A-192014-00	Dead Handle CP		335	A-193335-01	Wheel Guard	1
187	A-077187-01	Throttle Valve Handle Spring	1	604	A-192604-00	Dead Handle	1	(D01)	HS-625	Hexagon Bolt	1
B01	NR-415	Needle Roller	1	CP No.	A-192039-00	Damper CP		E01	SW-6	Spring Washer	1
B02	NR-413	Needle Roller	1	332A	A-192332-00	Lock Nut	1	F01	N-6	Nut	1
C02	O-S22	"O" Ring	1	649	A-192649-00	Joint	1	423	A-109423-00	Bevel Pinion	1
FA-7E-8F				712A	A-192712-01	Damper	1	426	A-109426-00	Bevel Gear	1
CP No.	A-193001-01	Housing Cover CP		140	A-077140-00	Cup Nut (For FA-7E-8)	1	434	A-025434-00	Bearing Washer	1
101	A-193101-00	Housing Cover	1	145	A-077145-00	Governor Valve	1	436	D-008436-00	Bearing Holder	1
140	A-077140-00	Cup Nut	1	149	A-077149-01	Governor Valve Spring	1	440	A-109440-00	Ring	1
332	A-192332-00	Lock Nut	1	155	A-069155-00	Governor Valve Spring Holder	1	503	A-193503-00	Spacer (B)	1
712	A-192712-00	Damper	1	201	A-193201-00	Housing	1	605	A-108605-00	Dead Handle Joint	1
C01	O-S29	"O" Ring	1	207	A-193207-00	Rotor	1	A01	BB-6002MN	Ball Bearing	1
CP No.	A-192003-01	Throttle Valve Body CP		208	A-193208-00	Rotor Blade	4	A02	BB-6301	Ball Bearing	1
108	A-192108-01	Throttle Valve Body	1	209	A-193209-00	Cylinder	1	A03	BB-608	Ball Bearing	1
109	A-192109-00	Throttle Valve Bushing	1	(B05)	SP-38	Spring Pin	1	A04	BB-6204ZZ	Ball Bearing	1
117	A-192117-00	Throttle Valve Spring	1	210	A-109210-00	Cylinder Upper Plate	1	B06	NR-2.515.8	Needle Roller	1
171	A-192171-00	Inlet Joint (PT)	1	211	A-109211-00	Cylinder Lower Plate	1	C05	O-S32	"O" Ring	1
171	A-192171-01	Inlet Joint (NPT)	1	214	A-069214-00	Adjusting Washer (T=0.2)	1	D02	CS-58B	Cap Screw	1
B01	NR-423FR	Needle Roller	1	214	A-069214-01	Adjusting Washer (T=0.3)	1	D03	CS-630S	Cap Screw	1
B02	SP-320	Spring Pin	1	214	A-069214-02	Adjusting Washer (T=0.5)	1	E02	PW-5	Plain Washer	1
C02	O-S16	"O" Ring	1	221	A-193221-00	Spindle Bearing Washer	1	H01	K-4410F	Key	1
C03	O-S14	"O" Ring	1	222	A-193222-00	Felt Ring	1	Z01	NP-0114	Name Plate	1
				231	A-193231-00	Silencer Plate	1	Z02	NPN-0x3.2	Screw Rivet	4

□ CP No. denotes the assembled parts comprising of more than 1 pc. of parts.

The related parts are shown in the thick frame.

□ #209 and 335 are supplied together with parts shown in ().

□ Specify parts number and quantity in ordering.

■ Standard Accessories : F-704 4mm Hex. Pin Wrench 1.

F-109 24mm Open-End Wrench 1.

F-203 32mm Open-End Pin Wrench 1.