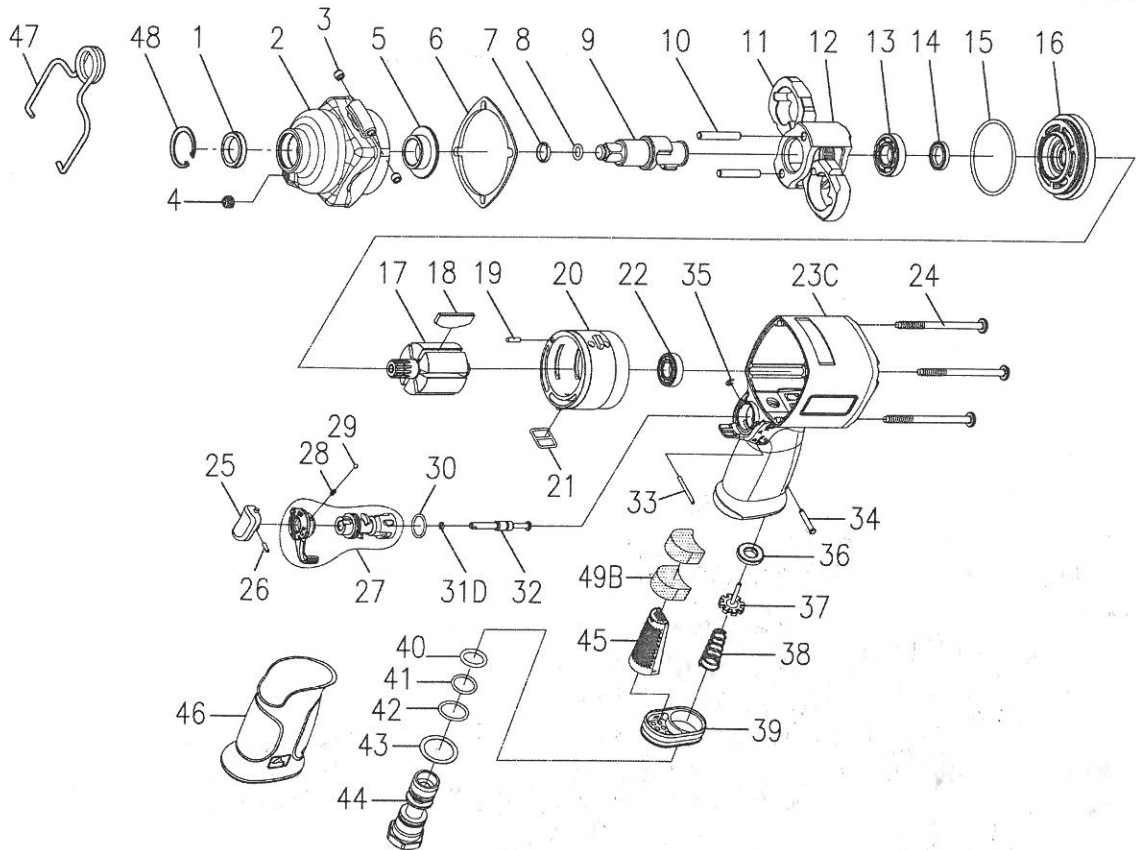


# 1/2" & 3/8" INDUSTRIAL AIR IMPACT WRENCH



Index No.	Part No.	Description	Q'ty	Index No.	Part No.	Description	Q'ty
1	00-4203	Oil Seal (□17×□23.8×4.2t)	1	26	00-3325	Spring Pin (□2×6L)	1
2	W243N-002	Hammer Case	1	27	243D-021	R/F Valve	1
3	I40S-108	Bushing	2		243D-034	F/R Lever	1
4	00-0612	Set Screw	1	28	305Y-027	Spring	1
5	243D-010	Anvil Bushing	1	29	00-3816	Steel Ball (□2.5)	1
6	243D-019	Front Gasket	1	30	00-41175	O-Ring (□13×□1.5)	1
7	242-026	Anvil Collar	1	31D	00-4190	O-Ring (φ 4×φ 1)	1
	250-033	Anvil Collar (1/2" Square)	1	32	243D-029	Trigger Pin	1
8	00-4144	O-Ring (□5×□1.5)	1	33	00-3351	Spring Pin (□2×24L)	1
	00-4103	O-Ring (P7) (1/2" Square)	1	34	243D-031	Pin	1
9	W243N-011NA3	3/8" Anvil	1	35	00-3207	E Retainer Ring (E2.5)	1
	W243N-011NA4	1/2" Anvil	1	36	243D-024	Bushing	1
10	243D-016	Hammer Pin	2	37	243D-025	Valve Stem	1
11	243D-017	Hammer	2	38	243D-027	Spring	1
12	243D-012	Hammer Cage	1	39	305-021	Exhaust Deflector	1
13	00-2317	Ball Bearing (EE4)	1	40	00-4152	O-Ring (□13.8×□2.4)	1
14	00-4204	Oil Seal (□12.5×□19.1×3.2t)	1	41	00-41204	O-Ring (□14×□1.78)	1
15	00-41112	O-Ring (□42×□2)	1	42	00-4127	O-Ring (□17.17×□1.78)	1
16	W243N-005	Front End Plate	1	43	305F-032	Washer	1
17	W243N-007	Rotor	1		243D-026A	Air Inlet (1/4" PF)	1
18	243D-008D	Rotor Blade	6		243D-026B	Air Inlet (1/4" PT)	
19	00-3423	Pin (□3×10L)	1	243D-026C	Air Inlet (1/4" NPT)		
20	243D-006	Cylinder	1	45	305F-042	Muffler	1
21	243D-030	Square Ring	1	46	243D-033	Handle Rubber	1
22	00-2326	Ball Bearing (6900)	1	47	I40S-102	Hanger	1
23C	W243N-001	Motor Housing	1	48	00-6103	Snap Ring (IR-24)	1
24	243D-028	Screw (M5)	4	49B	305V-027	Muffler	2
25	243D-023	Trigger	1				

Suggestion : Tightening torque for 4 pcs of M5 Screw must be controlled between 2.5 Nm and 3 Nm.