

Fuji USER MANUAL

ANGLE GRINDERS

MODELS : FA-7E-5VF, -6VF, -8VF




FA-7E-5VF, -6VF, -8VF

SPECIFICATIONS

Model	Max.Dia (Grinding Wheel)		Rotational Frequency	Spindle Thread Size	Angle Head Height		Overall Length		Mass		Air Consumption (At Load)		Air Inlet Thread Size	Overall Length	
	mm	in			mm	in	mm	in	kg	lb	m ³ /min	ft ³ /min		mm	in
FA-7E-5VF	180×6×22.2	7×1/4×7/8	7,000	5/8-11UNC (M)	101	3 31/32	307	12 3/32	3.1	6.8	1.4	49.5	PT or NPT 3/8	12.7	1/2
FA-7E-6VF	180×6×22.2	7×1/4×7/8	7,600	5/8-11UNC (M)	101	3 31/32	307	12 3/32	3.1	6.8	1.4	49.5	PT or NPT 3/8	12.7	1/2
FA-7E-8VF	180×6×22.2	7×1/4×7/8	8,400	5/8-11UNC (M)	101	3 31/32	307	12 3/32	3.1	6.8	1.4	49.5	PT or NPT 3/8	12.7	1/2

The performance figures are at 0.63MPa (6.3bar).

 Refer to "The Instructions and Warning for Safety Use" enclosed in each tool box.

FUJI AIR TOOLS CO., LTD.

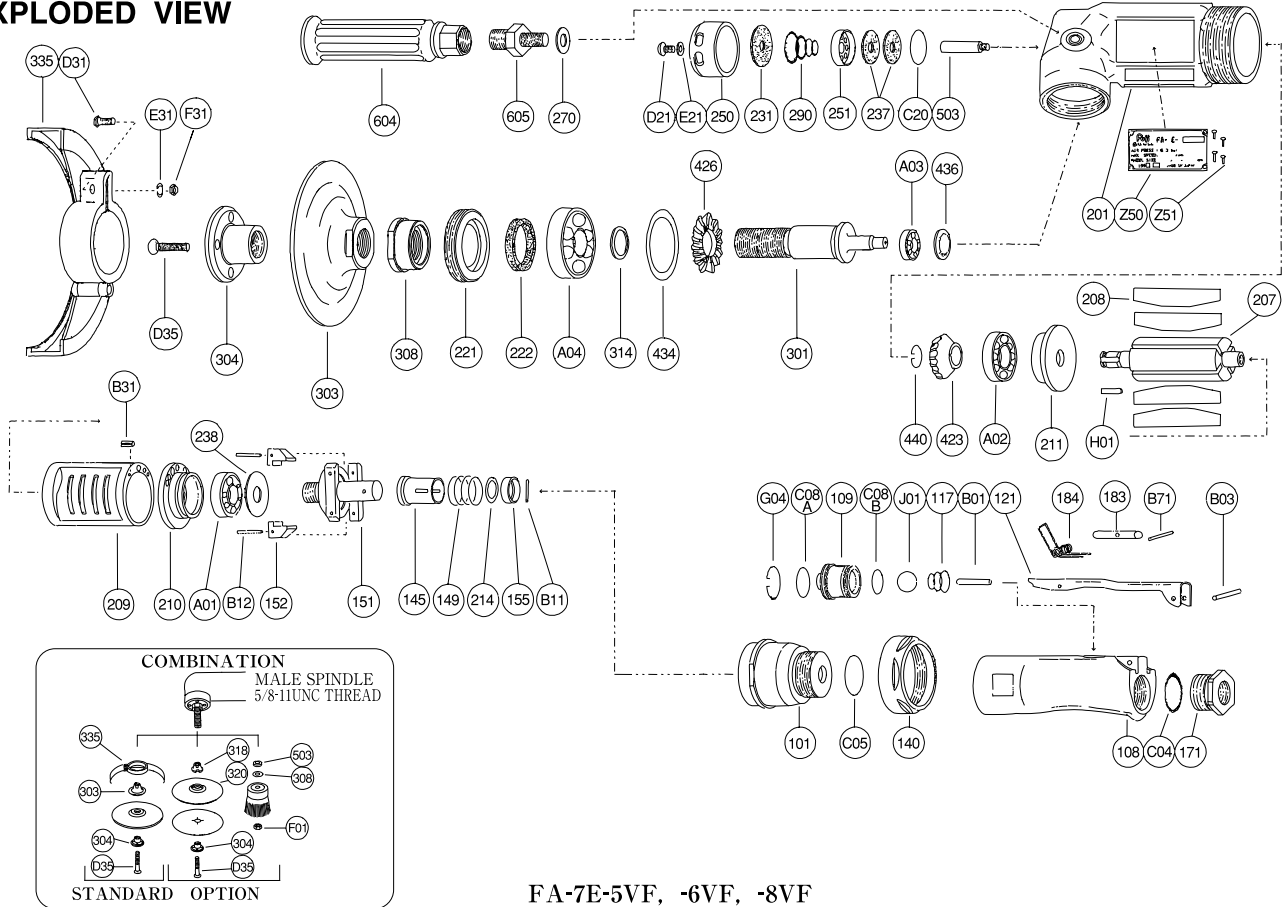
2-1-14, Kamiji, Higashinari-ku, Osaka, 537-0003 Japan

Tel : 81-6-6972-2335

Fax : 81-6-6972-2250

MODELS : FA-7E-5VF, -6VF, -8VF

EXPLODED VIEW



FA-7E-5VF, -6VF, -8VF

PARTS LIST

Index No.	Parts No.	Parts Name	Qty	Index No.	Parts No.	Parts Name	Qty	Index No.	Parts No.	Parts Name	Qty
FA-7E-5VF, -6VF, -8VF											
—	A-193001-02	Housing Cover Ass'y (PT)		145	A-077145-00	Governor Valve	1		A-109314-01	Wheel Spindle Washer (T=0.3)	(1)
—	A-193001-04	Housing Cover Ass'y (NPT)		149	A-077149-01	Governor Valve Spring (For FA-7E-8VF)	1		A-109314-02	Wheel Spindle Washer (T=0.2)	(1)
101	A-193101-01	Housing Cover	1		A-077149-02	Governor Valve Spring (For FA-7E-6VF)	1	335	A-193335-01	Wheel Guard	1
140	A-077140-00	Cup Nut	1		A-077149-03	Governor Valve Spring (For FA-7E-5VF)	1	(D31)	HS-625	Hexagon Bolt	1
C05	O-S29	"O" Ring	1	155	A-069155-00	Governor Valve Spring Holder	1	(E31)	SW-6	Spring Washer	1
—	A-192003-01	Throttle Valve Body Ass'y (PT)		201	A-193201-00	Housing	1	(F31)	N-6	Nut	1
—	A-192003-03	Throttle Valve Body Ass'y (NPT)		207	A-193207-00	Rotor	1		A-109423-00	Bevel Pinion	1
108	A-192108-01	Throttle Valve Body	1	208	A-193208-00	Rotor Blade	4	423	A-109426-00	Bevel Gear	1
109	A-192109-00	Throttle Valve Bushing	1	209	A-193209-00	Cylinder	1	426	A-025434-00	Bearing Washer	1
117	A-192117-00	Throttle Valve Spring	1	(B31)	SP-38	Spring Pin	1	434	A-025436-00	Bearing Holder	1
171	A-192171-00	Inlet Joint (PT)	1	210	A-109210-00	Cylinder Upper Plate	1	436	D-008436-00	Bearing Holder	1
	A-192171-01	Inlet Joint (NPT)	1	211	A-109211-00	Cylinder Lower Plate	1	440	A-109440-00	Ring	1
B01	NR-423FR	Needle Roller	1	214	A-069214-00	Adjusting Washer (T=0.2)	(1)	503	A-193503-00	Spacer (B)	1
B03	SP-320	Spring Pin	1		A-069214-01	Adjusting Washer (T=0.3)	(1)	604	A-025604-02	Dead Handle	1
C04	O-P20	"O" Ring	1		A-069214-02	Adjusting Washer (T=0.5)	(1)	605	A-108605-00	Dead Handle Joint	1
C08A	O-S16	"O" Ring	1	221	A-193221-00	Spindle Bearing Washer	1	A01	BB-6002MN	Ball Bearing	1
C08B	O-S14	"O" Ring	1	222	A-193222-00	Felt Ring	1	A02	BB-6301	Ball Bearing	1
G04	SR-R20	Snap Ring	1	231	A-193231-00	Silencer Plate	1	A03	BB-608	Ball Bearing	1
J01	B-9/16U	Urethane Ball	1	237	A-193237-00	Muffler Pad	2	A04	BB-6204ZZ	Ball Bearing	1
—	A-192019-00	Lock Lever Ass'y		238	A-109238-00	Bearing Cover (B)	1	B11	NR-2.515.8	Needle Roller	1
121	A-192121-00	Lock Lever	1	250	A-193250-01	Exhaust Cover	1	C20	O-S32	"O" Ring	1
183	G-144183-02	Lock Key	1	251	A-193251-00	Exhaust Valve	1	D21	CS-58B	Cap Screw	1
184	G-144184-00	Lock Spring	1	270	H-001270-00	Conical Spring Washer	1	D35	CS-630S	Cap Screw	1
B71	SP-218	Spring Pin	1	290	A-192290-00	Muffler Spring	1	E21	PW-5	Plain Washer	1
—	A-193010-00	Governor Weight Ass'y		301	A-193301-01	Wheel Spindle	1	H01	K-4410F	Key	1
151	A-193151-00	Governor Case	1	303	A-193303-01	Wheel Flange (A)	1	Z50	NP-0120	Name Plate	1
152	G-053152-00	Governor Weight	2	304	A-193304-03	Wheel Flange (B)	1	Z51	NPN-0X3.2	Screw Rivet	4
B12	GP-2.524GCH	Grooved Pin	2	308	A-193308-00	Spacer	1				
				314	A-109314-00	Wheel Spindle Washer (T=0.5)	(1)				

- The related parts are shown in thick frame.
- #209 and 335 are supplied together with parts shown in ().
- Specify parts number and quantity when ordering.
- The quantity of #214 and 314 are different according to the adjusting.

Standard Accessories

AC No.	Description	Qty
F-704	4mm Hex. Pin Wrench	1
F-109	24mm Open-End Wrench	1
F-203	32mm Open-End Pin Wrench	1