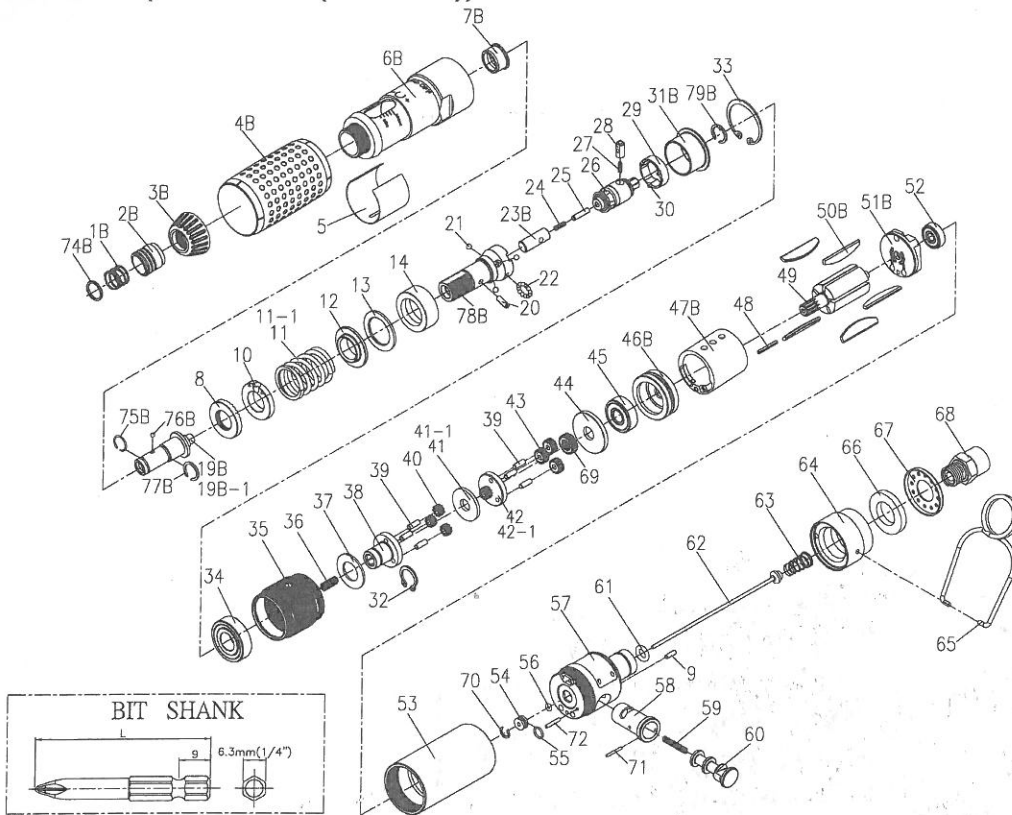


EXPLODING VIEW (TDCS-20S (Shut-Off))



Edition:02B

Index No.	Part No.	Description	Q'ty	Index No.	Part No.	Description	Q'ty
1B	B20S-418	Spring(□10.8x□0.8 x10.6L)	1	51B	C20S-305	Rear Plate	1
2B	C20S-417A	Quick Change Holder	1	52	00-2355	Ball Bearing(625Z □16x□5x5t)	1
3B	C20S-203A	Lock Cap	1	53	C20S-101	Motor Housing	1
4B	B20S-103	Housing Rubber	1	54	C20S-526	Guide Ring	1
5	C20S-204	Adjusting Cap	1	55	00-41189	O-Ring(□6x□1)	1
6B	C20S-201-B	Clutch Housing	1	56	00-41113	O-Ring(□2x□1.5)	1
7B	C20S-202A	Anvil Bushing	1	57	C20S-518	Seat	1
8	CS20S-430	Adjusting Nut	1	58	C20S-501	Valve Sleeve	1
9	00-3448	Pin(□2.5x8L)	1	59	C20S-528	Spring(□0.4x□3.5x19L)	1
10	CS20S-431	Adjusting Lock Ring	1	60	C20S-502	Reverse Valve	1
11	CS20S-429A	Spring(□23.1x□2.5 x29L)	1	61	00-41188	O-Ring(□5.7x□2.5x□10.7)	1
11-1	CS20S-429B	Spring(□23.7x□2.8 x29L)	1	62	C20S-314	Valve Stem	1
12	CS20S-433	Spring Seat	1	63	C20S-515	Spring	1
13	CS20S-451	Washer(□18.1x□27x1.5t)	1	64	C20S-603	Exhaust Deflector	1
14	CS20S-434	Anvil Ring	1	65	I40S-102	Hanger	1
19B	CS20S-405A	Anvil	1	66	C20S-601	Muffler	1
19B-1	CS20S-405B	Anvil	1	67	C20S-608	Deflector Cap	1
20	00-3319	Spring Pin(□3x12L)	1	68	C20S-604A	Air Inlet 1/4"PF-19	1
21	00-3823	Steel Ball(□5)	3	68	C20S-604B	Air Inlet 1/4"PT-19	1
22	00-3820	Steel Ball(□3/32")	19	68	C20S-604C	Air Inlet 1/4"NPT-18	1
23B	CS20R-432	Anvil Shaft	1	70	00-3115	Snap Ring(R8)	1
24	CS20S-435	Spring(□2.5x8L)	1	71	00-3367	Spring Pin(□1.5x12)	1
25	00-3444	Pin(□3x12.8L)	1	72	00-3447	Pin(□2x12L)	1
26	CS20S-436	Driving Clutch	1	74B	B20S-415	Spring Washer	1
27	CS20S-438	Spring(□2.4x7L)	1	75B	B20S-428B	Anvil Collar B	1
28	CS20S-437	Control Pin	1	76B	00-3816	Steel Ball (□2.5)	1
29	CS20S-449	Control Ring	1	77B	B20S-428A	Anvil Collar A	1
30	00-3445	Pin(□1.5x7.8L)	3	78B	CS20S-416	Transmission Shaft	1
31B	CS30S-439	Ball Keeper	1	79B	B20S-428C	Anvil Collar C	1
32	00-3507	Snap Ring(S12)	1	FOR TDCS-20S07			
33	00-3113	Snap Ring(R28)	1	43	C20S-443B	Planet Gear B	6
34	00-2305A	Ball Bearing(6001 □28x□12x8t)	1	41-1	C20S-444B	Washer B(2m/m)	1
35	C20S-440	Internal Gear	1	42-1	C20S-452B	Rear Gear Cage B+ Rear Gear B	1
36	C20S-450	Spring	1	FOR TDCS-20S11			
37	C20S-441	Washer	1	40	C20S-443A	Planet Gear A	3
38	C20S-442	Front Gear Cage	1	43	C20S-443B	Planet Gear B	3
39	00-3424	Pin(□3x8L)	6	41-1	C20S-444B	Washer B(2m/m)	1
44	C20S-448	Rear Cover	1	42-1	C20S-452B	Rear Gear Cage B+ Rear Gear B	1
45	00-2332	Ball Bearing(608ZZ □22x□8x7t)	1	69	C20S-447	Rotor Gear	1
46B	C20S-301	Front Plate	1	FOR TDCS-20S17			
47B	C20S-302	Cylinder	1	40	C20S-443A	Planet Gear A	6
48	00-3344	Spring Pin(□2x16)	1	41	C20S-444A	Washer A(2m/m)	1
49	CS20S-303	Rotor	1	42	C20S-452A	Rear Gear Cage A+ Rear Gear-A	1
50B	C20S-304D	Rotor Blade	5	69	C20S-447	Rotor Gear	1

Model	Hex Size of Bit	Bit Shank	Torque Range		Weight		Length		Free Speed r.p.m.	Sound Level (dBA)
			N-m	In-lb	kg	lb	mm	in		
TDCS-20S07	6.35mm(1/4")	9mm	1~4	8.8~35.4	0.88	1.93	255	10	700	75
TDCS-20S11	6.35mm(1/4")	9mm	1~3.5	8.8~31	0.88	1.93	255	10	1100	75
TDCS-20S17	6.35mm(1/4")	9mm	1~3	8.8~26.5	0.88	1.93	255	10	1700	75

©Air Hose Size:6.35mm(1/4") ; Recommended Air Pressure:85psi (6kg/cm²)0.6Mpa