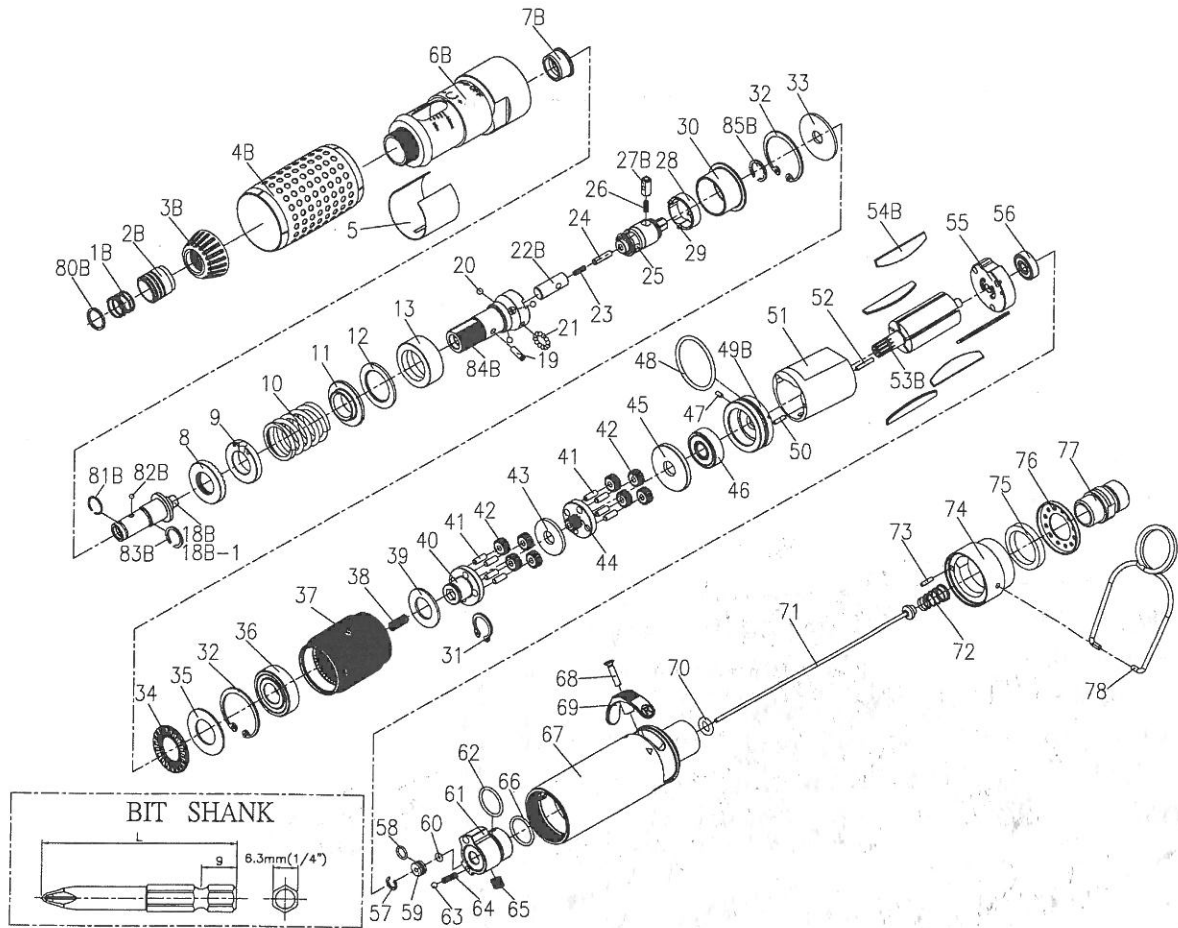


# EXPLODING VIEW (TDCS-30S05 (Shut-Off))



Edition:B

Index No.	Part No.	Description	Q'ty	Index No.	Part No.	Description	Q'ty
1B	B20S-418	Spring	1	46	00-2332	Ball Bearing(608ZZ □22x□8x7t)	1
2B	C20S-417A	Quick Change Holder	1	47	00-3328	Spring Pin(□2x4L)	1
3B	C20S-203A	Lock Cap	1	48	00-41177	O-Ring(□25.12x□1.78)	1
4B	B20S-103	Housing Rubber	1	49B	B20S-301	Front Plate	1
5	C20S-204	Adjusting Cap	1	50	00-3430	Pin(□2x8L)	1
6B	C30S-201-B	Clutch Housing	1	51	C30S-302	Cylinder	1
7B	C20S-202A	Anvil Bushing	1	52	00-3447	Pin(□2x12L)	1
8	CS20S-430	Adjusting Nut	1	53B	CS30S-303B-B	Rotor B	1
9	CS20S-431	Adjusting Lock Ring	1	54B	C30S-304D	Rotor Blade	5
10	CS30S-429A	Spring A	1	55	C30S-305	Rear Plate	1
11	CS30S-433	Spring Seat	1	56	00-2355	Ball Bearing(625Z □16x□5x5t)	1
12	CS20S-451	Washer(φ18.1xφ27x1.5t)	1	57	00-3115	Snap Ring(R8)	1
13	CS20S-434	Anvil Ring	1	58	00-41189	O-Ring(□6x□1)	1
18B	CS20S-405A	Anvil	1	59	C20S-526	Guide Ring	1
18B-1	CS20S-405B	Anvil	1	60	00-41113	O-Ring(□2x□1.5)	1
19	00-3319	Spring Pin(□3x12L)	1	61	C30S-502	Reverse Valve	1
20	00-3823	Steel Ball(□5)	3	62	00-41117	O-Ring(□15x□18x□1.5)	1
21	00-3820	Steel Ball(□3/32")	19	63	00-3805	Steel Ball(□1/8")	1
22B	CS30R-432	Anvil Shaft	1	64	305F-034	Spring	1
23	CS20S-435	Spring	1	65	00-0606	Screw(M6x6L)	1
24	00-3454	Pin(□3x14L)	1	66	00-41217	O-Ring(□16x □18x□1)	1
25	CS30S-436B	Driving Clutch	1	67	C30S-101	Motor Housing	1
26	CS20S-438	Spring	1	68	00-0509	Screw(M3xP0.5x16L)	1
27B	CS20S-437A	Control Pin	1	69	C30S-503	Reverse Knob	1
28	CS20S-449	Control Ring	1	70	00-41188	O-Ring(□5.7x□2.5x□10.7)	1
29	00-3445	Pin(□1.5x7.8L)	3	71	C30S-314	Valve Stem	1
30	CS30S-439	Ball Keeper	1	72	C30S-515	Spring	1
31	00-3507	Snap Ring(S12)	1	73	00-3448	Pin(□2.5x8L)	1
32	00-3113	Snap Ring(R28)	2	74	C20S-603	Exhaust Deflector	1
33	C30S-422	Washer	1	75	C30S-601	Muffler	1
34	00-2801	Roller Bearing(NTB1528)	1	76	C30S-608	Deflector Cap	1
35	00-1515	Washer	1	77	I40S-604A	Air Inlet 1/4"PF-19	1
36	00-2305A	Ball Bearing(6001 □28x□12x8t)	1	77	I40S-604B	Air Inlet 1/4"PT-19	1
37	C30S-440B	Internal GearB	1	77	I40S-604C	Air Inlet 1/4"NPT-19	1
38	C20SL-507	Spring	1	78	I40S-102	Hanger	1
39	C20S-441	Washer	1	80B	B20S-415	Spring Washer	1
40	C30S-442B	Front Gear Cage B	1	81B	B20S-428B	Anvil Collar B	1
41	00-3460	Pin(□4x8L)	8	82B	00-3816	Steel Ball (□2.5)	2
42	C30S-443B	Planet Gear B	8	83B	B20S-428A	Anvil Collar A	1
43	C20S-444B	Washer B(2m/m)	1	84B	CS30S-416	Transmission Shaft	1
44	C30S-452B	Rear Gear Cage B+ Rear Gear	1	85B	B20S-428C	Anvil Collar C	1
45	C20S-448	Rear Cover	1				

Model	Hex Size of Bit	Bit Shank	Torque Range		Weight		Length		Free Speed	Sound Level
			N-m	In-lb	kg	lb	mm	in	r.p.m.	(dBA)
TDCS-30S05	6.35mm(1/4")	9mm	3.5~10	30.8~88	0.97	2.13	261	10.2	500	78

©Air Hose Size:6.35mm(1/4") ; Recommended Air Pressure:85psi (6kg/cm<sup>2</sup>)0.6Mpa